



## Bathing establishment Fact sheet

Name of bathing establishment	AUGUSTUS
Address	Avenue of the Republic 3
City	Forte dei Marmi (Lu)
Contacts	Tel: +39 0584 787239 - <a href="mailto:reservation@augustusbeachclub.com">reservation@augustusbeachclub.com</a>
Website	<a href="https://www.augustusbeachclub.com/en/">https://www.augustusbeachclub.com/en/</a>

**TESTED BY:** [Handy Superabile Social Promotion Association](#) in summer 2023

**Please note** The following information refers to the verification date shown at the bottom of each sheet. The Association is not responsible for any significant changes made to the property after the visit.

### Summary

Bathing establishment fact sheet .....	1
Arrival at the facility .....	2
Private/public parking.....	2
Pathway from the parking lot to the main entrance .....	2
Reception welcome.....	3
Bar/restaurant .....	4
Internal pathways and common services .....	6
Internal pathways.....	6
Toilet and shower accessible to guests with reduced mobility .....	7
Changing room .....	8
Beach.....	9
Children's play area .....	11
Pool.....	12
Medical practices/health facilities.....	13

Project carried out with the contribution of





## Arrival at the facility

### Private/public parking

Presence of private parking	YES
Fund type of private parking	gravel
Presence of parking space reserved for people with disabilities	YES
Public parking nearby	YES
Fund type of public car park	asphalt
	

### Pathway from the parking lot to the main entrance

Pathway from the parking lot to the entrance	Via a small porphyry ramp + 2 wooden ramps with handrails on both sides and 160 cm wide, 320 cm long, 40 cm difference in height, 14% slope
There are indicators and tactile maps	NO
Useful width of door/entrance passage	greater than 90 cm





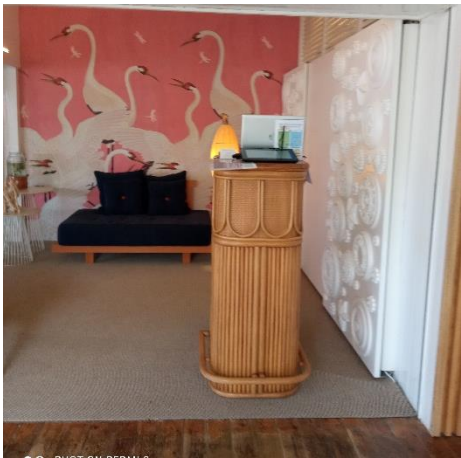

**Reception welcome**

Umbrella booking system	<input checked="" type="checkbox"/> Via the web <input checked="" type="checkbox"/> Via telephone <input checked="" type="checkbox"/> On site
Presence of multilingual staff	YES
Presence of plant plan with legend of services available	NO

Project carried out with the contribution of





Presence of visuo-tactile map	NO
Noticeboard/information panels at an average height of 130 cm in a well-lit area and a character size of at least 14 dpi with a contrast ratio greater than 4.5:1	NO
The staff has undergone training on welcoming people with various disabilities	NO
	

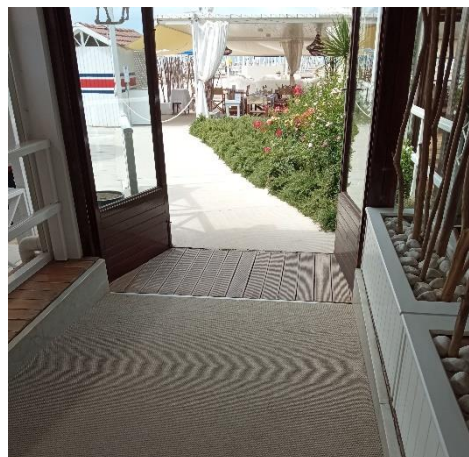
### Bar/restaurant

Type of venue	Bar/restaurant
Access to the venue	on level ground while to reach the veranda and the beach you must overcome the following ramps: first ramp 290 cm long and 25 cm difference in height, 9% slope - second ramp 300 cm long, 30 cm difference in height and 10% slope
Useful width of door/entrance passage	greater than 90 cm
Bar counter	greater than 100 cm
Type of tables	with central support
Space under the floor tables	69cm
Multilingual menu	not detected





Menu with large print characters	NO
Braille menu	NO
Table service for people with disabilities	YES
Availability of food for celiacs	<input type="checkbox"/> bread <input type="checkbox"/> pasta <input type="checkbox"/> cookies <input type="checkbox"/> ice creams <input type="checkbox"/> pre-packaged foods



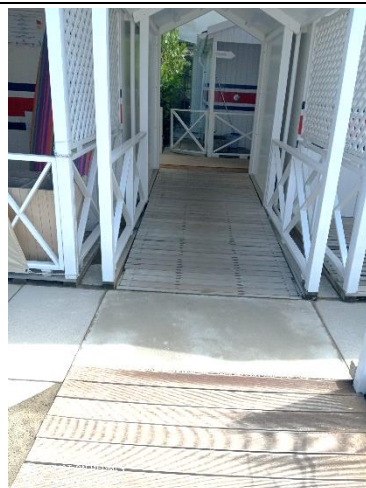


## Internal pathways and common services

### Internal pathways



Indicate whether the pathways connecting the entrance to the beach are flat or with ramps in addition to those already described

obstacle-free routes







**Toilet and shower accessible to guests with reduced mobility**

Number of toilets accessible/usable by guests with reduced mobility	1
Access to the venue	flat
Useful width of entrance door	greater than 90 cm
Toilet height	50cm
Open front toilet seat	NO
Support handles	on both sides
Flexible shower next to the toilet	NO
Free space on the sides of the toilet	to the left 20cm To the right greater than 90 cm front greater than 90 cm
Electric bell/telephone	YES
Washbasin with space underneath for a wheelchair	70cm
Height from the ground to the lower edge of the mirror	sufficient for use by a person in a wheelchair
Baby changing table	not detected
	
Shower accessible to guests with reduced mobility available	YES in common with the toilet room





Floor-level shower	YES
Shower chair	missing
Support handle	YES
Presence of shower head or latch	fixed shower head with flexible hand shower 110 cm from the ground
Electric bell/telephone	NO
	

### Changing room

Changing room accessible to guests with reduced mobility available	YES
Access to the venue	flat
Useful width of door/entrance passage	90cm
Dimensions of the changing room	sufficient for guest maneuvering in a wheelchair
Presence of cot	NO
Coat stand height from the floor	less than 140 cm and accessible to people in wheelchairs





**Beach**

Type of beach	sand
Access to the beach	From the restaurant or the entrance you reach the beginning of the beach via the following ramps: first ramp 290 cm long and 25 cm difference in height, 9% slope - second ramp 300 cm long, 30 cm difference in height and 10% slope
Walkway to reach the umbrellas	YES
Type of walkway	Cement and PVC
Walkway width	100cm





<p>Removable Platform between the walkway and the umbrella station to facilitate the passage and parking wheelchair</p>	<p>YES</p>
<p>Amphibious beach chair available for helping people with reduced mobility to enjoy swimming (owned by the establishment or by association)</p>	<p>YES</p>



Project promoted by



Regione Toscana



**Children's play area**

Children's play area	missing
----------------------	---------




Project carried out with the contribution of



Presidenza del  
Consiglio dei Ministri  
Ministro per la disabilità



**Pool**

The property has a swimming pool	YES
Access to the swimming pool	flat
Useful width of entrance gate	greater than 90 cm
Access to the tub	with smooth sloping ramp
Bathing aids for guests with reduced mobility	amphibious chair
	
	





**Medical practices/health facilities**

Hospitals near the facility	<b>Versilia Hospital SS 1, 335, 55049 Camaiole LU Telephone: 0584 6051</b>
Other healthcare facilities	<p><b>ASL Health District No. 12</b> Viareggio Via Sant'Elme, 30 Tel. 058483873</p> <p><b>Green Cross</b> Viale Italice, corner. via Risorgimento Tel. 058484013 Free first aid for white codes <b>Night medical guard</b> Tel. 0584 83896 (8pm-8am)</p> <p><b>Mercy</b> Via PI da Carrara, 32 Tel. 0584752133/0584 752149</p> <p><b>Medical service "San Camillo" nursing home</b> Via PI da Carrara, 37 Tel. 0584 7391</p> <p><b>Dialysis service</b> c/o Croce Verde Viale Italice, corner. via Risorgimento Tel. 058484013 affiliated with AUSL</p>

TESTED BY: Handy Superabile - Social Promotion Association - in summer 2023

